

GRAPEVINE

ST LAURENCE CHURCH, ALVECHURCH

July 2023



Places of Welcome: Belonging,
Friendship, Connecting

CONTENTS

- 01 Revd Gail writes...
- 02 Places of Welcome
- 03 Martin Allen Writes
- 04 Church@4
- 05 Cancelled Model Railway Exhibition
- 05 Ark Time
- 06 The Ark Afternoon Tea
- 07 The Ark: upcoming events
- 08 Church Flowers
- 09 Praying for Alvechurch
- 10 Funerals
- 10 Our Advertisers
- 11 Heritage Day
- 12 Church Diary
- 14 Church News
- 15 Our Advertiser - Metchley Manor
- 16 Everyday Faith
- 17 Children's Page
- 18 Ark Tots and Toddlers
- 19 Our Advertisers - Severn Valley Railway
- 20 Supporting St Laurence
- 21 Baptisms and Weddings
- 22 Our Advertisers
- 23 Our Advertisers
- 24 Our Team
- 25 Quiz and Chips

REVD GAIL WRITES...



After a recent visit to the A&E department, I received a notification on my phone from trip advisor to 'rate' my visit. One of the questions was around welcome and hospitality; How do you rate your welcome between 1 (lowest) and 5 (highest)? This got me thinking about how one might 'rate' the welcome and hospitality at St Laurence Church?

Jesus's expectations for hospitality are set high. The bible tells us that we should receive one another as though they are Christ themselves, that we should see the image of God in all people and treat them as God treats us, with love and grace. The hospitality of God welcomes people as they are, it is a place of belonging and of flourishing.

Over the last year St Laurence Church has been offering new spaces of worship, welcome and hospitality. It has been a year since we launched Places of Welcome, a space for friendship and conversation over free hospitality which includes tea, coffee and toast. We have reintroduced The Ark café, holding regular events throughout the year, these have proved to be very popular with tickets selling out early. We have held an animal service, a new service for advent which concluded with the switching on of the tower star and free hot chocolate, mince pies and cookies in The Ark. Each week church is open on a Wednesday morning offering a quiet space for reflection and prayer. And back in April we launched a new monthly café style worship in The Ark where we serve a selection of puddings and drinks as part of our hospitality.

Jesus has high standards for welcome and hospitality, and following in these footsteps, so do we. Why don't you come along to any of the above, or any other of our events and worship, a warm welcome awaits you!

In this issue of Grapevine you will find lots of information about the life of St Laurence Church and The Ark. You are very welcome to come and join us where you can.

Prayers and best wishes



PLACES OF WELCOME



Places of Welcome is a network of safe places where people can connect, belong and contribute.

Free refreshments, including toast!

**Wednesdays
10am – 12pm**

**St Laurence Church and The Ark,
School Lane, Alvechurch, B48 7SB**

Martin Allen writes



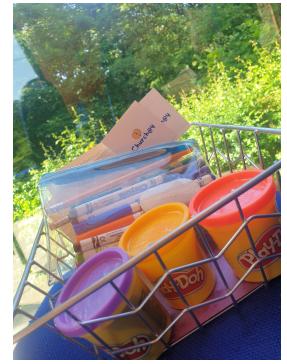
Were you at the Picnic in the Park I wonder? Wasn't it a wonderful day? There were dog shows and choirs. There were dancers and airplane flybys. Small businesses were selling goods from food to pamper products. It was amazing with charities, sports organisations, and a funfair ride. There was of course ice cream! All that topped off with people relaxing and picnicking in the sunshine! There was a real sense of togetherness and community.

I wonder how you experienced the Coronation recently with the pageantry of the day. Whilst most people were watching TV, there was still some sense of connection. If we go back just a little further, we remember that same togetherness in events such as the Queen's jubilee. Public events can connect us together in wonderful ways. Connecting to something bigger happens in other ways too. Volunteering as some find through helping a charity can do it. The new Alvechurch Village Larder is an example of people connecting with a common purpose. Social connections can help with wellbeing too.

I think human beings are made for relationship and to be in community. We want to be part of something bigger than ourselves and some seek that and value it. We may get a taste of that from experiences like those mentioned above. We can also get it from being part of a work community or family. Sadly, for those who do not have those communities to be part of, that can accentuate loneliness. Sometimes people feel hurt by relationships and must stay apart for self-protection.

Being part of God's family involves being part of something bigger than ourselves too. The church can give a similar sense of belonging to something bigger. You do not need to believe everything Christians believe. God's family is for everyone, and all are welcome to his celebrations. You can be part of something bigger than yourself and belong before you believe too. Yes, the family says and does things that can be a problem, but I like to think we get things right more often than wrong. When we get things wrong, we try to apologise as you might expect in a family. God promises to help us reset and restore relationships when things go wrong too so we have help!

If you enjoyed that sense of togetherness at the Picnic in the Park, why not give us a try out? The recently started Church at 4 on a Sunday afternoon is a relaxed way to check us out, with fun, craft, and food (puddings!). Next date is 2nd July 2023.



Last month at Church@4 we thought about how we can keep on track in our relationship with God. We heard the story of Adam and Eve as an example of how we are not always good at this, focussing on how if we try to keep the commands Jesus gave us, 'Love God, love others and love ourselves, we grow closer to God and one another. As a reminder of this we made keyrings to remind us to keep this focus in our everyday lives.

This month we are thinking about the story of a very tall tower, this is wonderful story where we hear about God's sense of humour. Come and join us as we think how through God's encounter with people who thought they were more important and greater than God informs our journey of faith.

The worship at Church@4 is created to be inclusive and informal as we worship God through interactive songs, bible telling, teaching and prayer. All interaction is offered by invitation, you chose how much or little you wish get involved.

At Church@4 we serve free puddings and refreshments.



Church@4 is a monthly café style gathering of fun, interactive worship for all

We gather on the following Sundays in 2023:

4th June
2nd July
6th August
3rd September
1st October
5th November
10th December

Come and hear how much God loves us as we share pudding, songs and bible stories, with an invitation to explore deeper through interactive responses.

**St Laurence Church, 4pm
@ The Ark, School Lane, Alvechurch, B48 7SB**

Church@4 is a worship space that is generous in welcome and delights in diversity!



Cancelled

Model Railway Exhibition

The model railway exhibition on July 8th has had to be cancelled.

My enthusiastic message was at least two months too late, and did not allow for the Covid gap which had taken away any flow in arrangements needed to keep the event going.

I am sorry to disappoint any enthusiasts who saw the article, or who saw any other adverts (now cancelled) but the event has finally run out of steam.

David Richmond



SUNDAY FAMILY WORSHIP AND ARK TIME

2nd July

9:15am Family Communion

Children in church

9th, 16th & 23rd July

9.15am Ark Time - each week

*We will continue to find out how God grows
good 'fruit' in us*

*We will look at the fruit of kindness, goodness
and faithfulness*

30th July

10:30am United Worship

with activities for children

Bring along your Babies, children, or grandchildren to join us for our Family Worship.

Under 8's, including toddlers, enjoy singing, stories and craft activities with loveable Jack the Labrador puppet.

Over 8's Group explore similar Bible stories and themes, along with activities.

We look forward to meeting you.



The Ark Afternoon Tea

A selection of sandwiches
Gluten Free Sandwiches can be pre-booked

Sausage or cheese rolls

&

A selection of cakes including scones.

Elderflower Fizz

Unlimited tea and Coffee

August | 31st | 2023

ARRIVE FROM 12.30PM WITH FOOD SERVED AT 1PM

Advance booking only

£10 per ticket

Please contact Lynda

0121 447 7955

admin@thearkalvechurch.co.uk

The Ark - upcoming events

Ultimate Girls Vintage

Craft Fayre

Saturday 15th July

12pm - 4pm

Following a first successful event in April, the next vintage fayre will be held at The Ark.

Please contact

www.ultimategirls.co.uk

for further details or to book a stall

The Midland Sinfonia

Saturday 22nd July 7.30pm

The next musical evening at the Ark will be French Fancies, hosted by The Midland Sinfonia. Please see their ad on page 14 for further details



The Ark - some spaces over the summer but Autumn party slots filling up fast!

As the weather improves, fewer parents chose indoor parties for children's birthdays. However, some villagers are very organised and our autumn slots are filling up!

If you'd like details about hiring the Ark for birthday parties ready for the Autumn school term, please contact Lynda in the Ark office on 0121 447 7955 or by email at admin@thearkalvechurch.co.uk

Church Flowers

Creative co-ordinator vacancy

It is with some sadness that I have to announce I am no longer able to coordinate weekly flower arrangements in church.. The years have caught up with me and I have found it increasingly difficult to manage. This opportunity can be a wonderful challenge to someone a little younger.

I took over almost 20 years ago from Isabel Lowe as coordinator and before that had helped the team of flower arrangers. Over the years it has been a pleasure to work alongside so many members of our congregation who have given their time. At the risk of omitting some names I have to mention Monica Clarke, Elizabeth Clement, Brenda Davies, Dawnie McDonald , Lynda Wolstencroft, Janet Wright and Helen Gardener who have been willing team members and over the years we had a lot of fun together and enjoyed the occasional Easter treat or Christmas mince pie when we sat down together at the end of a session!

Flowers have always been important in churches over the years and certain flowers and herbs have special meaning in our lives i.e Rosemary for Remembrance. In the Old Testament God tells Moses to put an image of Almond Blossom and buds on the Altar.

I do hope that someone will come forward to take over this role and enjoy, as much as I have, working in the quiet of church enhancing our beautiful church building. I will still be around to help as much as I am able.

Ann Thurrell



On behalf of the PCC and St Laurence Church we extend huge thanks to Ann for her commitment to co-ordinating this team. We give thanks for her creative flair, and the many displays she has so generously provided.

Revd Gail

"Prayer is nothing else than being on terms of friendship with God."

-Teresa of Avila

Prayer

We pray for our schools, as they approach the end of the school year may they look back with thankfulness and look ahead with hope.

We pray for local business, giving thanks for the services they offer to our community.

We pray for conversations and consultations happening around restoring a village Post Office.

We pray for all who live and work in Alvechurch, with a focus on all who live on Station Road, The Becks and Latimer Road.

Hillside WI

At our June meeting Pat welcomed everyone, including our guest speaker, Rev Gail Rogers, Vicar of Alvechurch and Beoley churches, who sat patiently through our business section. Gail then took over and related how she became ordained as a minister. It took several years of study. She started her working life as a nurse and continued in that capacity with the NHS. for 11 years. It was a fascinating journey of hard work and commitment, with the support of her husband, all taken whilst bringing up her family. She held a question session after her talk, which was followed by refreshments and social time.

The Group meeting hosted by Beoley WI is being held on June 20th at Beoley Village Hall. The theme is 'I do like to be beside the seaside', and is to include a fish and chip supper.

Our July meeting is on the 5th and it is our birthday meeting. We are holding a Beetle Drive, which is something we haven't had for a long time, so a bit of a change.

A trip has been organised for later in July to Moreton Hall Gardens near Inkberrow.

We meet in the Ark at St Laurence Church on the first Wednesday of the month at 7.30pm. We always welcome visitors and new members.

Please contact Pat McDonagh on 0121 628 4121.

Funerals

June

Nigel Leonard

Michael Sprigg

... go forth from this world:
in the love of God, the Father who created you,
in the mercy of Jesus Christ who redeemed you,
in the power of the Holy Spirit who strengthens you.



A. PULLEN
• MEMORIALS •

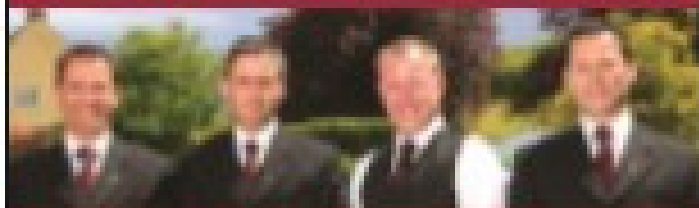
Additional Inscriptions & Renovations

SHOWROOM AND WORKSHOP
338 ALCESTER ROAD, BURCOT
BROMSGROVE B60 1BH

Tel: (01527) 876200

www.apullenmemorials.co.uk
Email apullenmemorials@hotmail.co.uk

THOMAS BROTHERS



An Independent Family Owned Funeral Director

Family owned funeral homes in Redditch, Bromsgrove, Wythall, Alvechurch & Alcester. We provide a friendly, dignified service paying special attention to detail.

REDDITCH **BROMSGROVE**
01527 547777 **01527 83170**

WYTHALL ALVECHURCH ALCESTER
01564 822001 0121 445 3422 01789 330939



"A family concern"

www.thomasbrothers.co.uk
email: admin@thomasbrothers.co.uk



heritage open days

Heritage Open Day

Saturday 16th September

This year we are holding our Heritage Open Day on **Saturday 16th September**.

It will be an opportunity to celebrate both the history of our church, dating back to 1239, rebuilt between 1858 and 1964 by the renowned church architect, William Butterfield, and also our modern church hall, The Ark, winner of the 2007 EASA President's Award for best Ecclesiastical Architecture.

We are pleased to announce that many of our participants who had volunteered to entertain and educate at last year's event have already confirmed they will be with us this year.

Our programme of events, confirmed to date, includes storytelling based on the tale of our 14th century Knight, Sir John Blanchfront, tours around the church, and a nature trail around the churchyard. There will be stands and demonstrations from our Ark classes and communities - a great way to see what you would like to try!!

The village's community choir will be performing, and there will be refreshments - including barbeque, beers and cakes.

The event will conclude with Pimm's and hymns.

More participants will be announced as confirmations are received.

www.heritageopendays.org.uk

 @heritageopenday

#HODs

 /heritageopendays

 @heritageopendays



ST LAURENCE CHURCH DIARY

JULY 2023

What's going at St Laurence Church, The Ark and Alvechurch Community

St Leonard's, Beoley Summer Fete

Saturday 1st July, 1.30pm-4.30pm

Family Worship with Holy Communion

Sunday 2nd July, 9.15am

Morning Worship

Sunday 2nd July, 11.15am

Church@4

Sunday 2nd July, 4pm

PCC Meeting PCC Members Only

Tuesday 4th July, 7.30pm

Places of Welcome

Wednesday 5th July, 10.00am - 12pm

Open Church

Wednesday 5th July, 10.00am - 12pm

Ark Tots and Toddlers

Thursday 6th July, 9.30am

A BCP Service of Holy Communion St Leonard's Church, Beoley

Thursday 6th July, 10am

Wedding Bookings at St Leonard's Church, Beoley

Thursday 6th July, 6pm- 8pm

Family Worship with Ark Time

Sunday 9th July, 9.15am

Celebration of Holy Communion

Sunday 9th July, 11.15am

Baptism Preparation at St Leonard's, Beoley

Tuesday 11th July, 7.30pm

Places of Welcome

Wednesday 12th July, 10.00am - 12pm

Open Church

Wednesday 12th July, 10.00am - 12pm

DIARY JULY CONT.

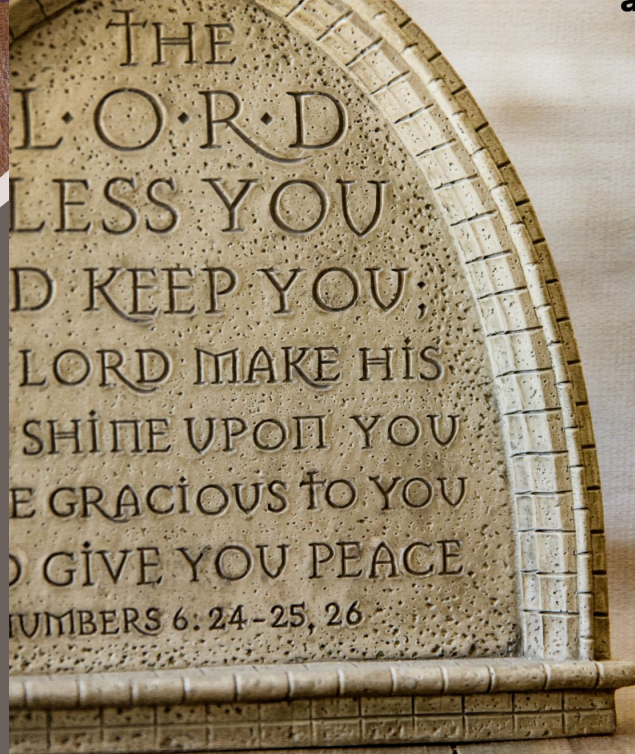
What's going at St Laurence Church, The Ark and Alvechurch Community

- Ark Tots and Toddlers** Thursday 13th July, 9.30am
- Family Worship with Ark Time** Sunday 16th July, 9.15am
- Morning Worship** Sunday 16th July, 11.15am
- Places of Welcome** Wednesday 19th July, 10.00am - 12pm
- Open Church** Wednesday 19th July, 10.00am - 12pm
- A BCP Service of Holy Communion
St Laurence Church, Alvechurch** Wednesday 19th July, 10am
- Wedding Bookings at St Leonard's Church, Beoley**
Thursday 20th July, 6pm- 8pm
- Family Worship with Ark Time** Sunday 23rd July, 9.15am
- Celebration of Holy Communion** Sunday 23rd July, 11.15am
- Places of Welcome** Wednesday 26th July, 10.00am - 12pm
- Open Church** Wednesday 26th July, 10.00am - 12pm
- United Worship** Sunday 30th July, 10.30am
- Prayers and Anointings for Healing and Wholeness**
Sunday 30th July, 4pm



Prayers with Anointing for Healing and Wholeness

Sunday 30th July at 4pm



10AM HOLY COMMUNION FROM THE BOOK OF COMMON PRAYER

ST LEONARD'S, BEOLEY

ST LAURENCE, ALVECHURCH

1ST THURSDAY OF MONTH

3RD WEDNESDAY OF MONTH

July 6th
August 3rd
September 7th
October 5th
November 2nd
December 7th

June 21st
July 19th
August 16th (Morning Prayer)
September 20th
October 18th
November 15th
December 20th

St Laurence, Alvechurch

PRAYER MINISTRY



10.30-11.00

EVERY SUNDAY MORNING

IN THE LADY CHAPEL

HERE TO SUPPORT YOU

IN PRAYER



THE MIDLAND SINFONIA
Professional Orchestras reaching out to the Heart of England

Find us on:   

"French Fancies"

An evening of French musical treats including...
Symphony Op.11 - Joseph Bologne, Chevalier de St Georges
Boléro - Ravel (chamber orch. arrangement) ♪ *Requiem Op.48 - Fauré*

Saturday 22nd July 7.30pm
(doors/bar open 7pm)

St Laurence Church, Alvechurch, B48 7SB

Guest performers include:
Conductor - Dexter Drown
Soprano Soloist - Isabelle Palmer ♪ Baritone Soloist - Charlie Baigent
The Oakville Singers & friends

Tickets in advance from: www.midlandsinfonia.co.uk
'Gin & Pickles' or 'The Lounge', Alvechurch

OR on the door

Prices: £13/£3 students & under 16s in advance
£14/£3 students & under 16s on the door (cash or card)

Quality care in Edgbaston you can trust

When a family is thinking about care for a loved one, they want the best - they want to know that the care home they choose will put their loved one's safety, happiness and well-being first.

Metchley Manor is managed by award-winning provider Care UK - one of the UK's most highly successful care home operators* with over 40 years' experience delivering high quality care to older people.

Metchley Manor stands out from other care homes with its large apartment-style living and luxury facilities. The home offers a choice between two room types, each with their own ensuite bathrooms, private dining areas and kitchenettes. Our one bed suites are ideal for individuals, whilst our companion suites offer an additional room, perfect for couples to enjoy as an extra living area. Offering residential and dementia care, including short-term respite stays, the grand facilities and lovely grounds at Metchley Manor will change your view of care homes for the better.

The lifestyle teams at our home organise a huge variety of group and one-to-one activities, with plenty going on each day, and residents can enjoy trips out and visits from the local community too.

Residents at Metchley Manor also enjoy award winning hospitality, with the home winning Best Dining Experience in 2022, and Head Chef Scott Tame recently being



shortlisted for the Public Sector Catering Awards in 2023 as Chef of the Year. Scott has been praised for ensuring that residents dine with dignity, have plenty of choice, and are served great food that looks, tastes and is of the same standard as fine dining.

Metchley Manor care home
5 Church Road, Edgbaston - Birmingham,
West Midlands B15 3SH
careuk.com/metchley-manor

Visit our website or call 0121 4689 344





Please tell us about yourself.

I spent my childhood in theological colleges because my father was a theologian. I'm married to Martin and have two adult daughters Juliet and Izzy. It was a delight to see Juliet and Rory get married at St Laurence recently. I enjoy sewing and music.

Where might we find you every day, and what sort of things would you be doing or being?

At present during the week, I'm in the Queen Elizabeth Hospital in Edgbaston where I work as an Occupational Health Consultant. I work in a team who provide help and advice about people's fitness to do their jobs and about any adjustments they may need.

How do you experience God in the joys and challenges of everyday life?

I am thankful for family and home and the extended family of the village and church. These are reminders that God cherishes each of us. Whatever challenges I experience, God has seen them all before. I find that reassuring.

How do you share your faith with others in everyday life?

I believe everybody is a unique person precious in God's sight. When people have health conditions affecting their work, they may perceive themselves as devalued. I try to find adaptations to help them stay in work to help them be productive, have a purpose and make a contribution.

How does your faith grow through everyday living?

I am encouraged by the people who are committed to helping and supporting others, despite the challenges of recent years.

“Ministry” is what all believers are called to, not just for those ordained.

How can we support you in yours?

I am an Authorised Lay Minister, involved in music in worship. It would be helpful to know what aspects of music ministry help people to build their relationships with God.

How can we pray for you?

It would help to have wisdom and diplomacy negotiating the needs of managers and employees in my work.

'Then Jesus summoned his twelve disciples
and gave them authority...'



Matthew 10.1

Can you find the names of 11 of the disciples?
Which disciple from the list is missing?

i	t	r	m	y	v	t	n	d	e	m	g	s	o
d	b	z	t	p	m	b	g	g	e	o	e	t	p
u	a	x	n	w	e	r	d	n	a	f	n	d	x
s	r	e	r	t	s	e	t	t	c	k	c	d	p
t	t	h	a	d	d	a	e	u	s	t	e	d	n
j	h	r	i	o	z	p	n	s	q	c	n	n	r
t	o	i	r	a	c	s	i	s	a	d	u	j	r
a	l	h	i	u	o	y	z	l	p	m	e	f	m
i	o	m	n	f	r	i	s	s	i	m	o	n	s
e	m	a	t	t	h	e	w	e	z	h	a	h	c
p	e	s	h	c	e	n	t	m	m	n	p	i	t
c	w	e	a	o	m	p	y	e	i	a	o	n	s
o	o	a	e	o	i	i	e	o	p	o	j	n	h
i	i	n	p	t	p	d	s	y	f	d	l	a	o

These disciples are taking too
much with them.

Put a cross over each item
they don't need to take.



- | | | |
|----------------|--------|---------|
| bartholomew | john | thomas |
| judas iscariot | james | james |
| thaddaeus | simon | simon |
| andrew | philip | matthew |

Crack the code by circling every 3rd letter.

Find out the good news Jesus sent the disciples to proclaim.

fytrphcae kiksiyponfegbcdnpolnm njoegf
cdhfgezyawxvfgeoln hgirts mlndcezvapqr

St Laurence Church and The Ark, Alvechurch

ARK TOTS AND TODDLERS

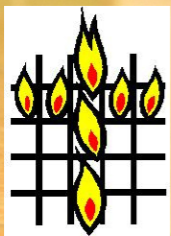
A friendly play environment for babies and little ones under 5, with their parents or carers.

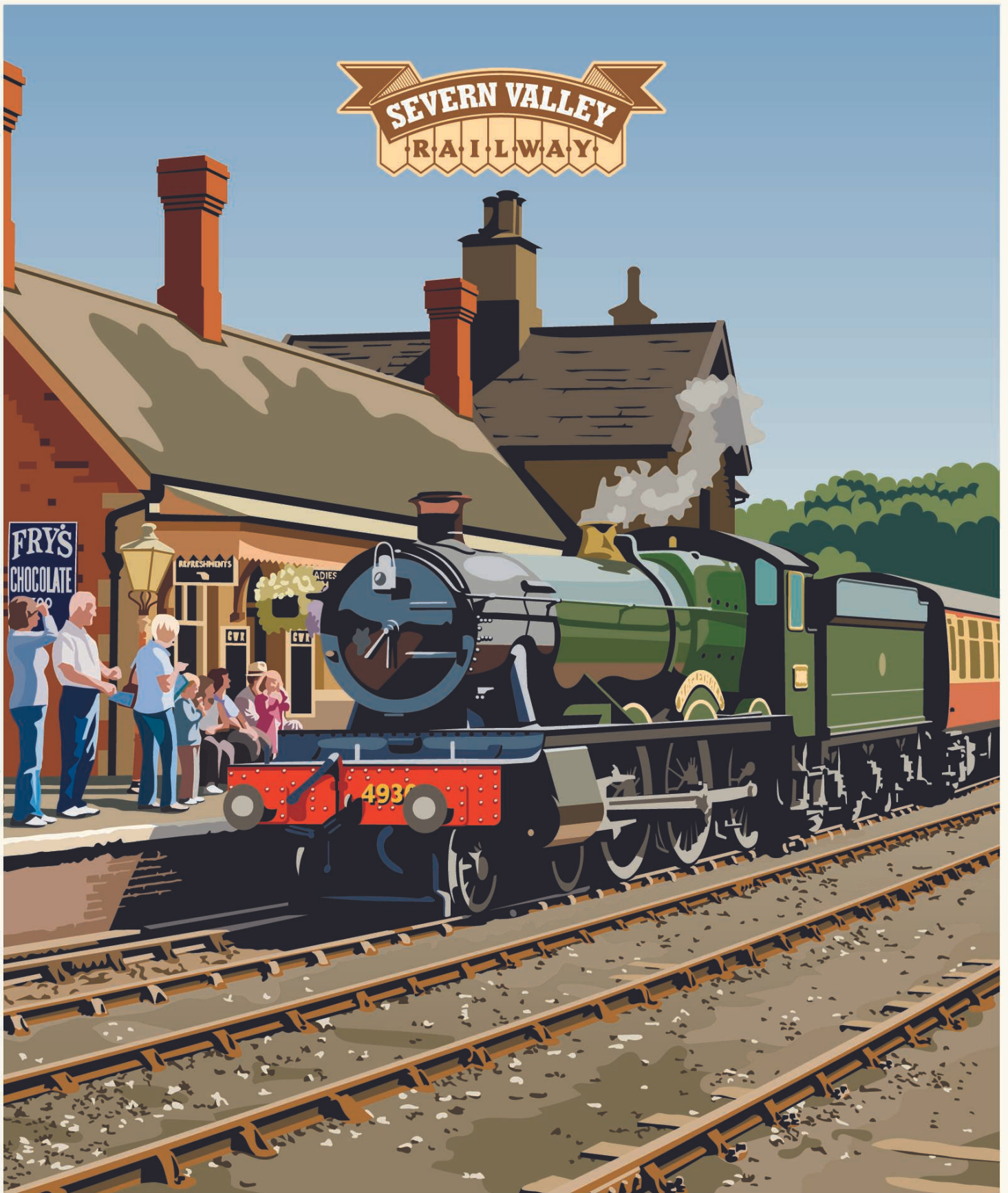
A time to play and chat, with each session ending in singing time.

Thursday 9:30am - 11am - Termtime

£2 per session, per family, with as many drinks and biscuits as you like

For more information contact sarah100work@gmail.com.





EXPERIENCE THE GOLDEN AGE OF STEAM TRAVEL

Book your tickets now: SVR.CO.UK | 01562 757 900

Supporting St Laurence Church



St Laurence Church relies on the generosity of giving to sustain its mission and ministry. Through the dedication of volunteers and financial giving we maintain the beautiful grade2* listed building and its churchyard.

You can support this ongoing ministry through one off or regularly giving. This can be done in several ways.

Text giving via DONR

STLALVECHURCH 5 to 70085 TO DONATE £5
STLALVECHURCH 10 to 70085 TO DONATE £10
STLALVECHURCH 20 to 70085 TO DONATE £20

BANK TRANSFER

ALVECHURCH PCC

20 71 45 80119792 Ref 'Your Name'

Through the Parish Giving Scheme

For more information visit www.parishgivingscheme.org.uk

Or for a pack pop into church or The Ark and pick one up

Or please contact Lynda at

admin@thearkalvechurch.co.uk or

call 0121 447 7955 for a Parish Giving Pack.

Thank you for your support and generosity.

Alvechurch PCC - Registered Charity number 1131783

June Baptisms at St Laurence Church



Freya O'Keefe

*'I baptise you in the name of the Father
and the Son and the Holy Spirit'*

Weddings at St Laurence Church

April

Hannah Oakton & Thomas Young

May

Juliet Allen & Rory Douglas

June

Sophie Baxter & Rory Wilson

Vickie Roberts & Alexander Stanley

*So they are no longer two, but one flesh. Therefore what God
has joined together, let no one separate.*



THE LAWNS RESIDENTIAL CARE

Exceptional quality accommodation for senior adults and the elderly.

24 hour care from professional, caring staff.

All set within beautiful gardens and terraces.

School Lane, Alvechurch, B48 7SB
Tel: 0121 445 4098
Fax: 0121 445 4544
www.thelawnsresidentialcare.co.uk

Spring View Care Nursing Home



Spring View Care provides small homely nursing home where our residents are at the heart of everything. We aim to provide nursing homes where we ourselves would be happy to stay.

We operate two high quality Nursing Homes:

- 1: Grosvenor House in Alvechurch
- 2: Tutnall Hall in Bromsgrove

To arrange a visit call
Tel: 0121 445 0033

www.springviewcare.co.uk



- CARPET & UPHOLSTERY CLEANING SPECIALISTS
- DOMESTIC & COMMERCIAL
- ECO FRIENDLY

FAMILY RUN SINCE 1980

0121 445 4247

07748 801658

www.WainwrightsCarpetCleaning.co.uk

ALL GLAZING & LOCKSMITHS

All double glazing repairs
Misted/broken glass replaced
Doors & windows re-aligned

Anti-snap locks



35 years experience

For free advice & 100% honest, reliable service, call or text

Jason on 07789 761 412



MORTONS FUNERAL DIRECTORS

Here to Help

Whatever style of funeral you are looking for you can put your trust in us.

Contact us for more information

“Where saying goodbye means everything”

24 hour service: 0121 453 9111
www.mortonsfunerals.co.uk



James Giles and Sons Ltd

The Complete Funeral Directors

BROMSGROVE 01527 872318

DROITWICH 01905 783188

STUDLEY 01527 852213



www.jamesgilesandsonsltd.co.uk

AS TIME GOES BY

MEMORIALS THAT REFLECT A LIFETIME

Supplier of Headstones & Cremation Tablets

KEVIN PORTER

Tel: 01527 550505

Mobile: 07835 523640

Email: kfporter@blueyonder.co.uk

Web: www.astimegoesby.org.uk



Unit 5, Dunlop Road, Hunt End Industrial Estate, Redditch, Worcestershire B97 5XP



WE ARE A SENIOR COMPANION & CONCIERGE SERVICE

Call or email for
a chat today.

0774 703 0014

enquiries@bettertogetherservices.co.uk

LOCATIONS

Redditch / Studley
Inkberrow / Feckenham
Barnt Green / Alvechurch
Bromsgrove / Droitwich

DONNA CONCANNON
YOUR PERSONAL TRAVEL AGENT



01527 543493 / 07718 999120

Donna.Concannon@thepersonaltravelagents.co.uk

www.thepersonaltravelagents.co.uk/donna-concannon

[@donnaconcannonpersonaltravelagent](https://twitter.com/donnaconcannonpersonaltravelagent)



OUR TEAM



Revd Gail Rogers

Priest in Charge

The Rectory, School Lane

0121 824 5257

07867 853813

revdgail@icloud.com



Lynda Lewis

Parish Administrator

0121 447 7955

admin@thearkalvechurch.co.uk



Sue Phillips Wardle

Licensed Lay Minister

55 Birmingham Road

0121 445 0505



Helen Ayling

Licensed Lay Minister

"Tarncroft", Hewell Lane, Vigo

0121 445 6176



Michael Davenport

Church Warden

0121 447 7955



Graham Clark

Church Warden

The Coach House, School Lane

0121 445 2547

Mark Linton

Deputy Church Warden

Contact details: 0121

Andy Notley

Deputy Church Warden

0121



Colin Bennett

Bell Tower Master

01527 64077



Quiz and Chips

Friday 29th September

7:30pm start, doors open at 7pm

The Ark, School Lane, B48 7SB

Teams of up to 6 people max

£10 per person including fish and chip supper.

Veggie option available, please request on booking.

Licensed bar on evening.

*Booking in advance by payment of ticket by
15th September.*

For tickets see Graham or Lynda in the Parish Office

Heritage Day

SATURDAY 16TH SEPTEMBER 2023

10AM - 4PM



Deadline for Grapevine August 2023 Edition

If you wish to submit an article or advert
the deadline is -
Monday 17th July